

Perception

- Procedural synthetic data only - no real world images
- Fundamental visual features
- No privacy risk



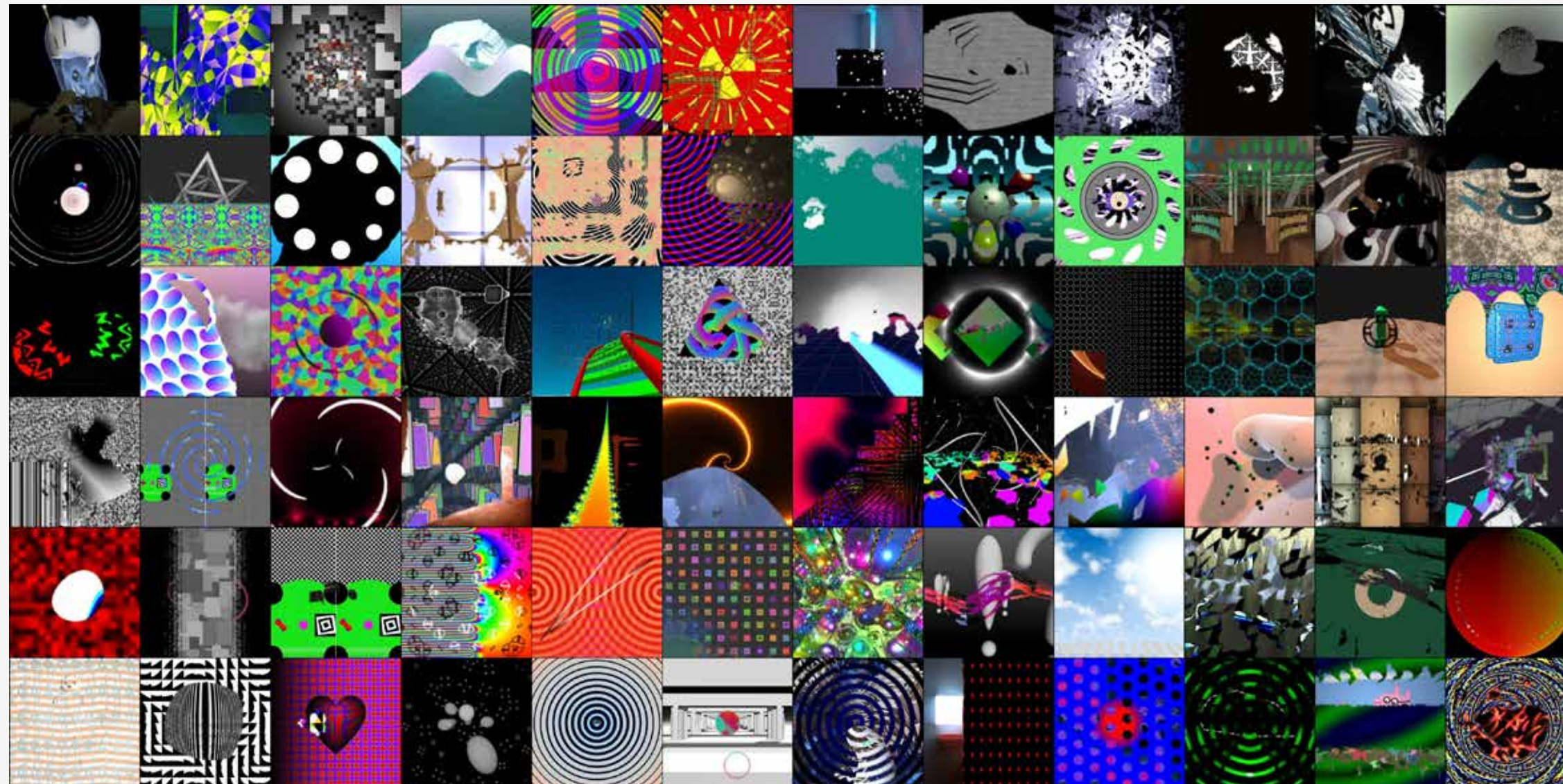
Procedurally Trained
Embedding Model



Training-free model
(e.g. KNN, PCA)



Self-supervised training
(DINO)



Knowledge

- Real world images - but no training
- Efficient
- Editable
- Explanaible

Visual Memory

